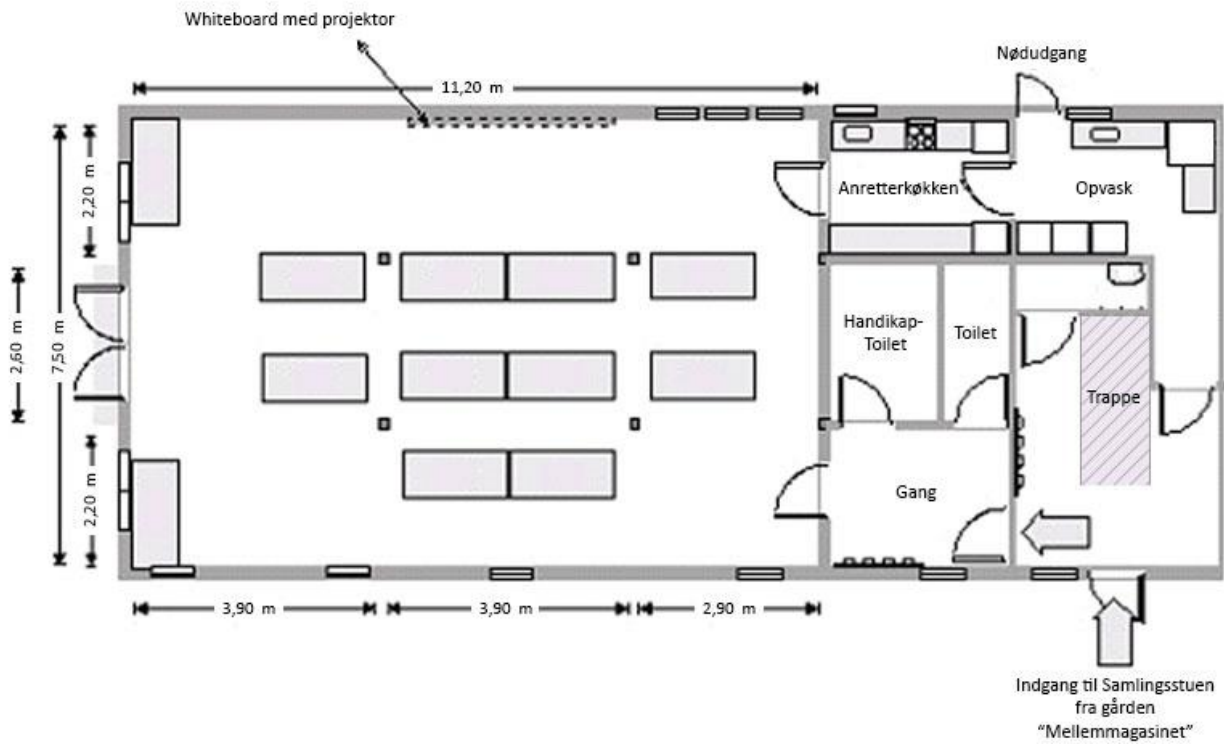
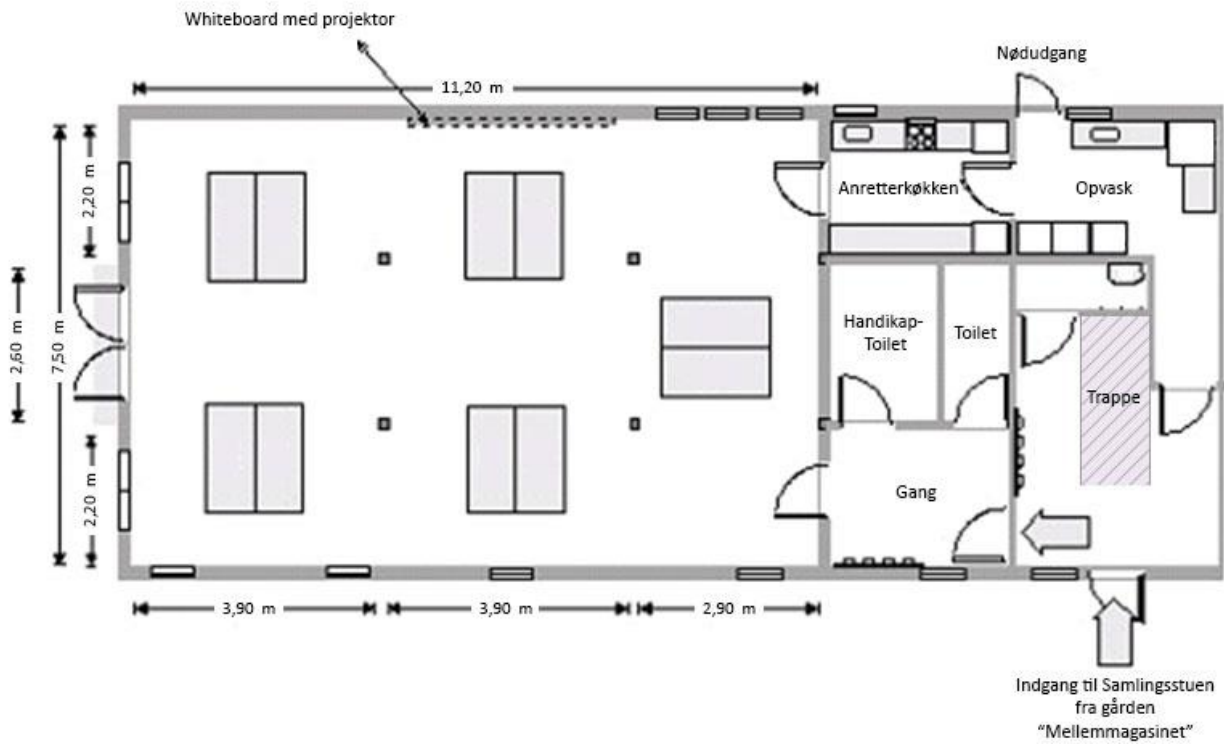


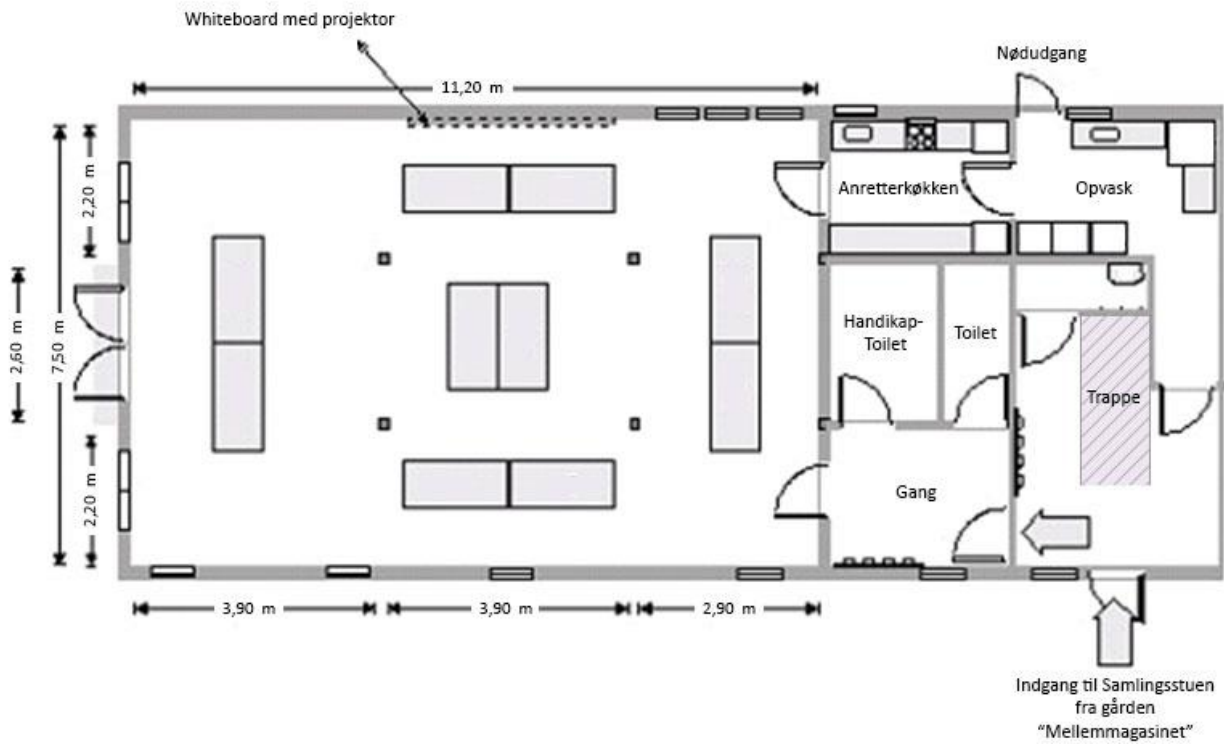
Samlingsstuen
Opstillingseksempel: 60 personer
Borde 90 x 180 cm



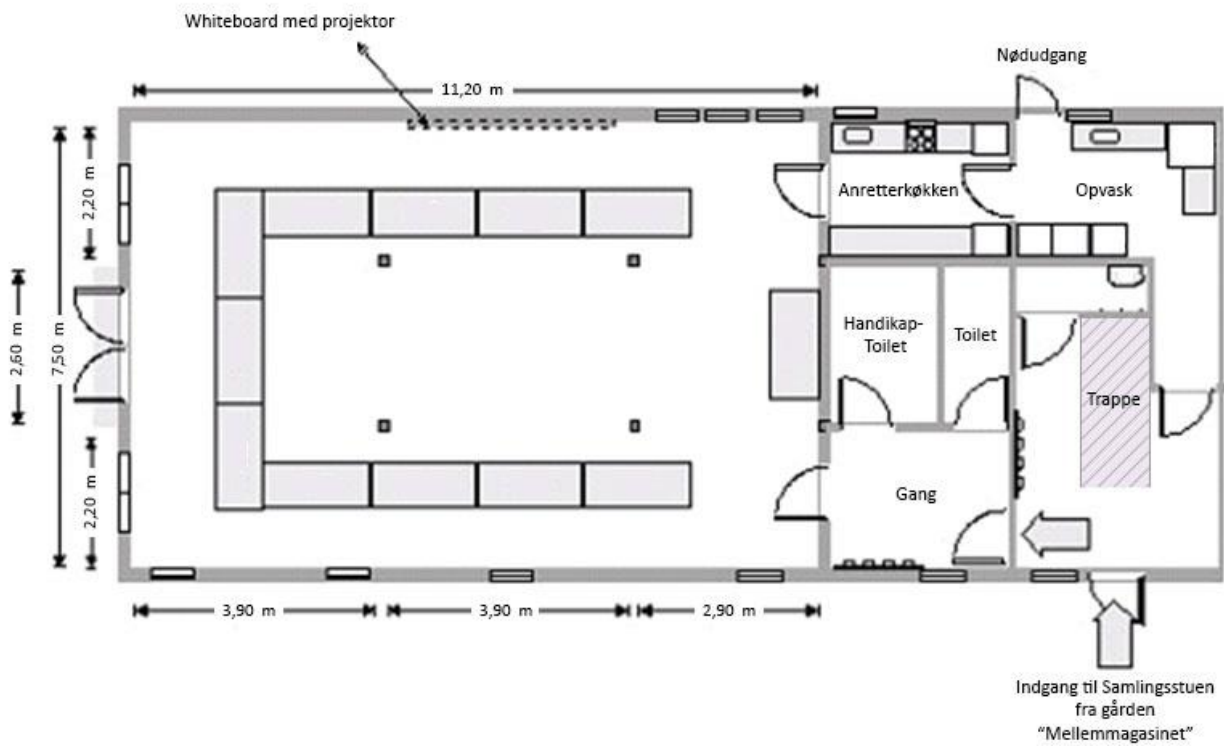
Samlingsstuen
Opstillingseksempel: 50 personer
Borde 90 x 180 cm



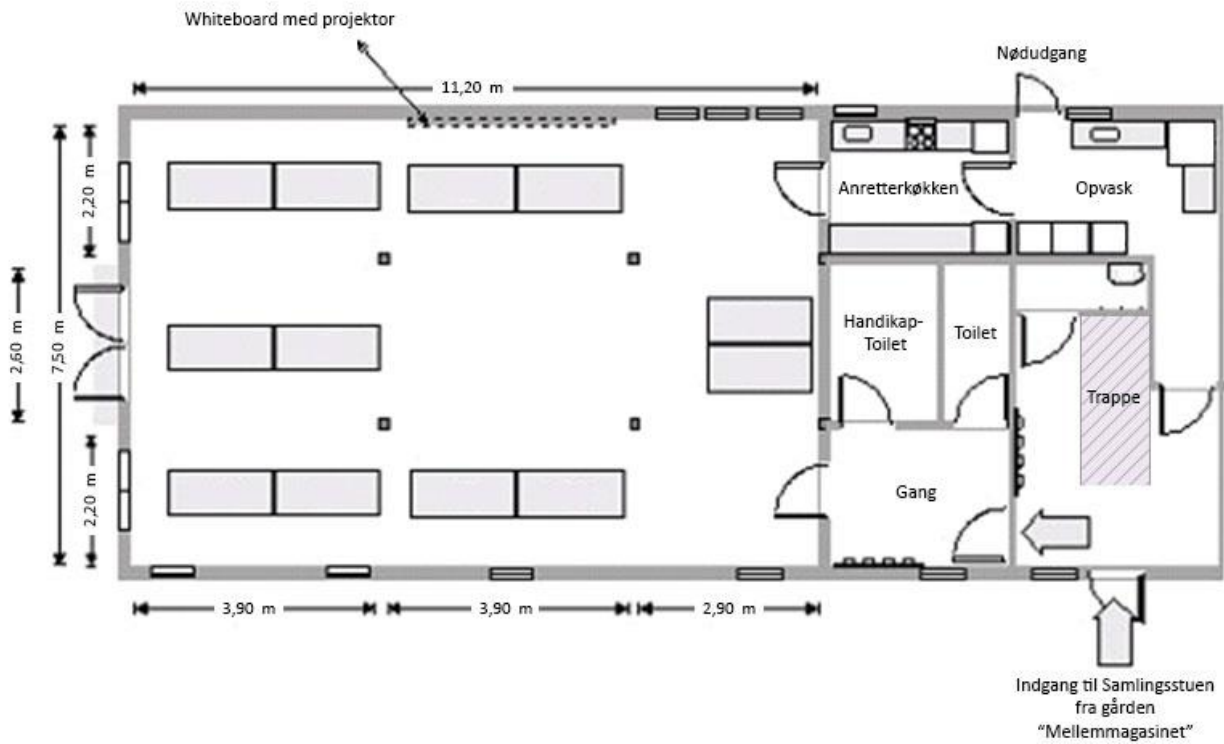
Samlingsstuen
Opstillingseksempel: 66 personer
Borde 90 x 180 cm



Samlingsstuen
Opstillingseksempel: 66 personer
Borde 90 x 180 cm



Samlingsstuen
Opstillingseksempel: 70 personer
Borde 90 x 180 cm



Samlingsstuen
Opstillingseksempel: 70 personer
Borde 90 x 180 cm

